



MINISTERUL TRANSPORTURILOR ȘI INFRASTRUCTURII,
AEROCLUBUL ROMÂNIEI

B-dul Lascăr Catargiu nr. 54, sector 1, București, România, cod 010673
Tel/fax 021-312 36 19; 317 38 63, www.aeroclubulromaniei.ro,

Bucharest, 10.10.2011

ROMANIAN
proposal to host the

**10th FAI WORLD ADVANCED
AEROBATIC CHAMPIONSHIPS 2012**

The Romanian Aeronautical Federation and the Romanian Aeroclub would like to organize the **World Advanced Aerobatic Championships in Romania in 2012**.

After a long absence, Romania wants to rejoin the world aerobatics.

1. Proposed dates:

- July 19th - July 29th
- August 09th - August 19st

2. Location

PLOIESTI

Aeroclubul "Gheorghe Banciulescu" Strejnic, situated 2km W from Ploiesti

1. Facilities:

- hangar for aircraft storage and maintenance
- platform for handling aircraft
- office space for contest administration
- fire and rescue services
- asphalt runway 750 m – 08/26
- grass runway 960 m – 09/27

2. History

- 1986 – at the Ploiesti airfield was organized the Socialist Countries Aerobatic Championship







3. Airport information

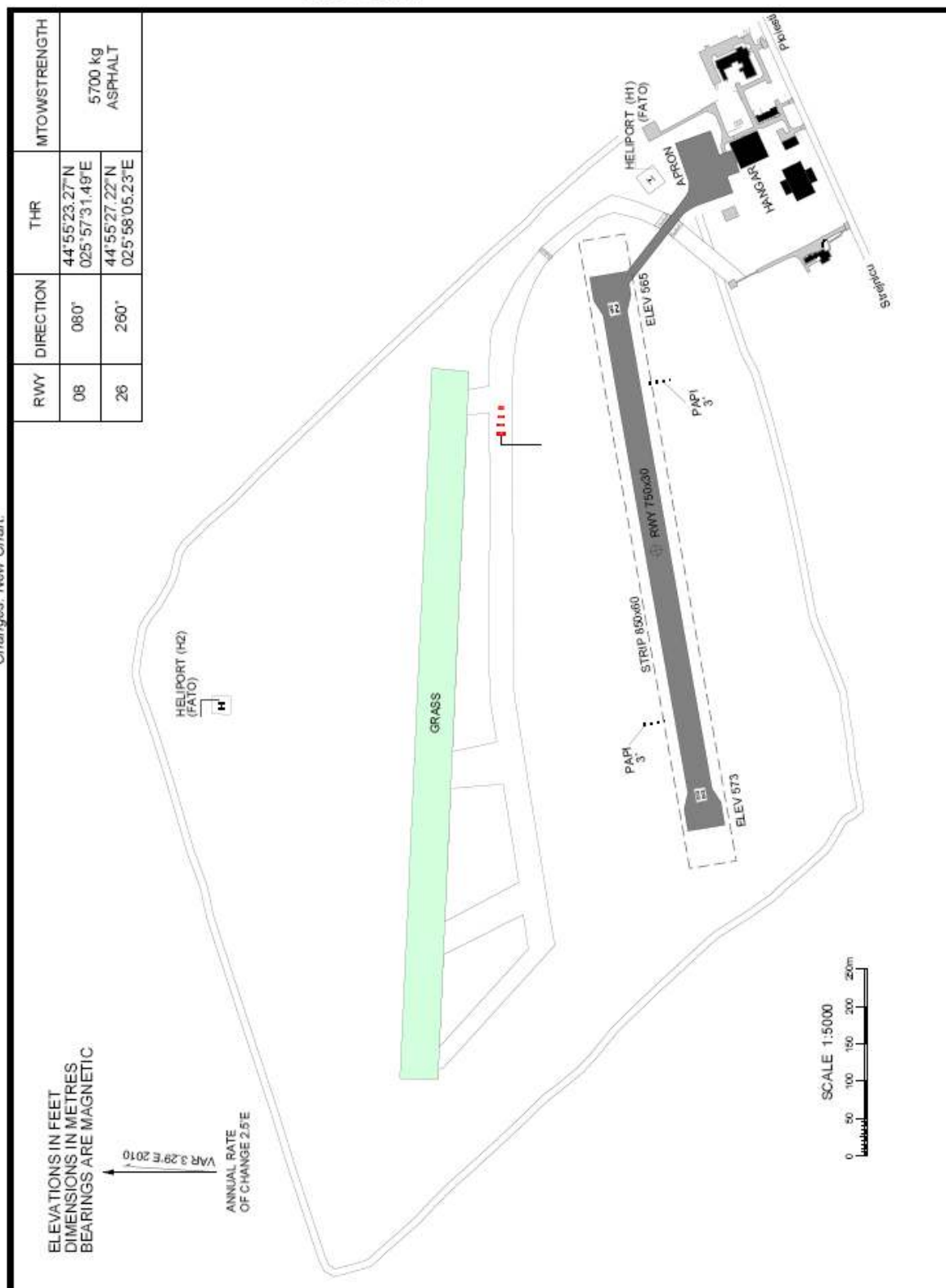
- | | |
|-------------------------------|----------------------------------------------------------|
| - ICAO code: | - LRPW |
| - Name: | - Gheorghe Valentin Bibescu – Ploiesti |
| - Location: | - 081°, 2 km from Ploiesti / 261°, 0.5 km from Strejnicu |
| - Coordinates: | - 445525N 0255748E |
| - Elevation: | - 574 FT |
| - Call sign: | - nil |
| - Frequency: | - 118.400 MHz |
| - Runway length: | - 750 x 30 m asphalt |
| - Runway designator: | - 08 / 26 |
| - Types of traffic permitted: | - VFR |
| - Hangar space: | - 1024 m2 |
| - 2nd hangar in construction: | - 1000 m2 |
| - NAV AID: | - nil |
| - Local traffic regulations: | - nil |
| - Noise abatement proced.: | - nil |

44° 55' 25" N
AERODROME CHART - ICAO 025° 57' 48" E
ELEV 574FT

OPC 118.400

PLOIESTI
Ploiesti-Gheorghe Valentin Bibescu (LRPW)

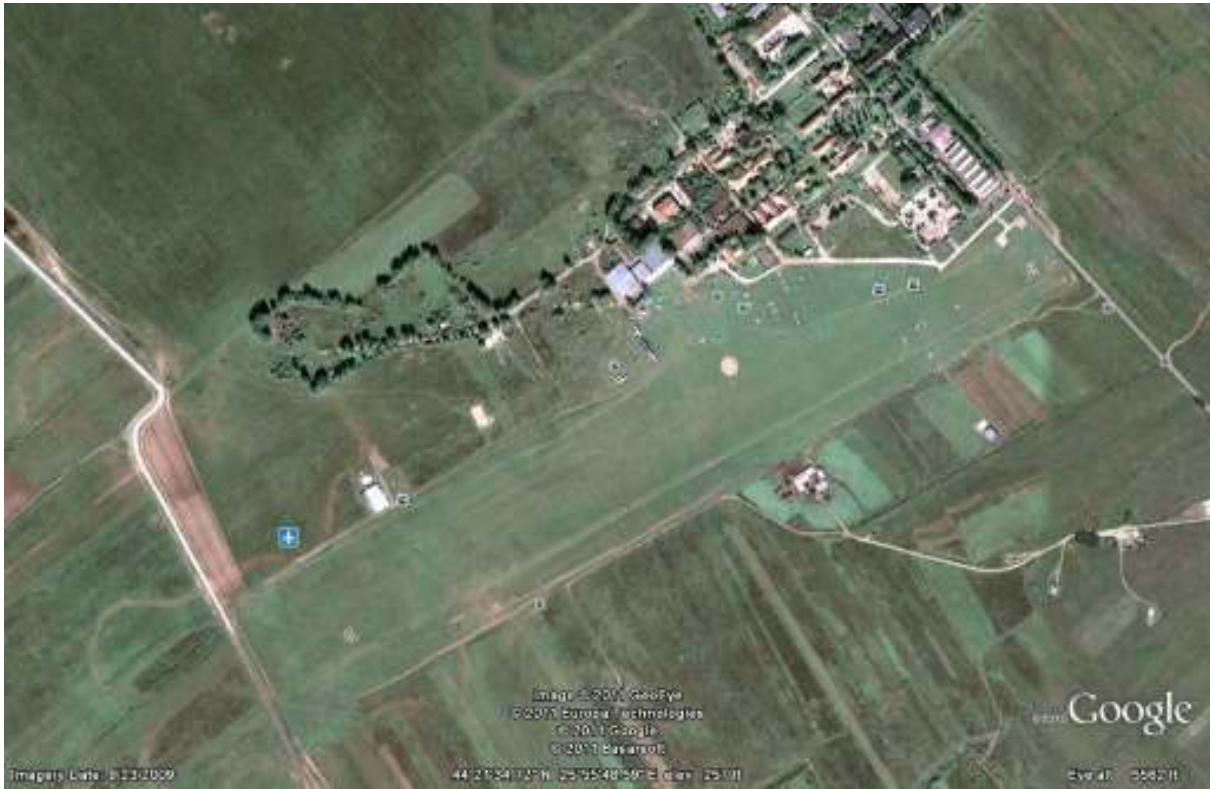
Changes: New Chart.



3. Training possibilities near Ploiesti

Aerodrom Clinceni

- Location: - 18km SV Bucuresti
- Coordinates: - N44 21'50" E25 56' 15"
- Elevation: - 80 m
- Frequency: - 128.300 MHz
- Runway dimensions: - 1300 x 100 m grass
- Runway designator: - 06 / 24



4. Entry fees

- **competitors** - **EUR 1.650**
- **other team members and observers** - **EUR 1.400**

The entry fees cover:

- fuel and oil for competition flights;
- shared accommodation – double room;
- breakfast, lunch and dinner;
- transport between airfield and accommodation places;
- official and social functions;
- programmes arranged by the organizer;

5. Info on weather

The climate is similar to that of the nation's capital, Bucharest. According to the Köppen climate classification, the city falls within the temperate humid continental climate (Dfa) of the hot summer type.

Month	Mai	June	July	August	Sept.	October
Average high, degr.C (F)	23 (73)	27 (81)	28 (82)	28 (82)	24 (75)	18 (64)
Average low, degr.C (F)	10 (50)	14 (57)	16 (61)	15 (59)	11 (52)	6 (43)
Precipitation mm (inches)	71.1 (2.799)	76.2 (3)	63.5 (2.5)	58.4 (2.299)	43.2 (1.701)	33 (1.3)

6. Info on accommodation

In the city of PLOIESTI, we have some:

- 3 star hotels, like:

- **Hotel Tiara**, situated right in the center of Ploiesti. Hotel Tiara offers easy access to all sights, shops and offices.

- **Hotel Acapulco** is part of the class of 3-star hotel, is designed to provide a 4-star confort to our customers. Big large furnished and decorated in an original style, allowing the ideal use of space.

- 4 star hotels, like:

- **Hotel Vigo**, Built at the turn of the century and entirely restored in 2007, Vigo Hotel represents the most beautiful example of the art of living in the style of the "Belle Époque", in Prahova county.

- **Hotel Central**. The impressive and completely renovated Hotel Central in a historic building in the center of Ploiesti, only 28 miles away from Henri Coanda International Airport Bucharest.

7. Proposed Contest Director

Contest Director - TBA

